



1



2



3

4

5

6

7

Conservation strategy for the Mekong giant catfish *Pangasianodon gigas*

8

9

10

11



Photo © MRC Fisheries Programme

12

13

14

15

16

17

18

Supported by

19



26

27

28
29
30
31
32
33
34
35
36
37
38
39
40
41
42
43
44
45
46
47
48
49
50
51
52
53
54
55
56
57
58
59
60
61
62
63
64
65
66
67
68
69
70
71
72
73
74
75
76
77
78

Citation:

MGCWG (2008) Conservation strategy for the Mekong giant catfish *Pangasiaodon gigas*. Mekong Giant Catfish Working Group Report 5. All MGCWG Reports are available on:
<http://www.aquaticresources.org/mekongcatfish.html>

Preparation of this document

This conservation strategy has been developed by the Mekong Giant Catfish Working Group. The group met in a series of workshops from 2005 to 2007 in order to coordinate research activities, synthesize information, and develop this conservation strategy. Financial support from the Darwin Initiative, Mekong River Commission, UNDP/IUCN/MRC Mekong Wetlands Biodiversity Programme, Thai Department of Fisheries, and WWF International is gratefully acknowledged.

79
80
81
82
83
84
85
86
87
88
89
90
91
92
93
94
95
96
97
98
99
100
101
102
103
104
105
106
107
108
109
110
111
112
113
114
115
116
117
118
119
120
121
122
123
124
125
126
127
128
129
130
131
132
133
134
135
136

Executive summary

Species and importance: The Mekong giant catfish (MGC) *Pangasianodon gigas* is one of the world's largest freshwater fish. A charismatic animal revered throughout the lower Mekong region, the species is of great cultural importance. It is also widely recognized as an indicator of ecological integrity of the Mekong ecosystem, due to its long-distance migrations, size and longevity. Owing to its rarity, the species does not contribute significantly to the Mekong fisheries catch in biomass or value (but is highly sensitive to fishing). The species is herbivorous and unlikely to exert an important influence on ecosystem structure or functioning. The species is listed as critically endangered in the 2003 IUCN Red List.

Legal status: The species is protected by national law in Cambodia (where it must be released if caught in fisheries) and in Thailand (where fishing for the giant catfish is prohibited, but special permission can be granted by the Department of Fisheries). In the Lao PDR, no specific legal protection exists for the species, but it is protected alongside other aquatic resources by the general provisions of the environment law, water resources law and forestry law. In Vietnam, the species is listed in the Red Book and thus afforded special legal protection.

Population status: The species appears to be naturally rare, and is likely to have maintained a small but stable population throughout much of the 20th century. Reconstructed spawner abundance was relatively stable at about 250 animals prior to 1983 (11-71% of unexploited abundance). The population then declined dramatically to just 50 spawners in 1995 (2-14% of unexploited abundance). The Chiang Khong fishing 'boom' thus reduced spawner abundance by about 80% in just ten years. The population has since recovered to about 145 animals (7-40% of unexploited abundance) by 2006. Much of this predicted recovery is based on maturation of fish that were spawned about 20 years previously, and would occur even if for any reason reproduction had failed in the recent past. Spawner abundance in the absence of fishing has been estimated at 355-2200 animals.

Conservation vision and goals: The core conservation vision or goal of the Mekong Giant Catfish Conservation Group is the maintenance of a viable wild population of Mekong giant catfish and the restoration of its historical distribution. Maintenance of a genetically representative captive population is crucial as 'insurance' against possible (if not likely) extinction in the wild. Maintenance of critical habitats and ecosystem processes in the Mekong basin is clearly important if a wild population is to be maintained. The presumed transboundary migrations and reliance on a variety of habitats of the MGC make it an ideal flagship species for ecosystem conservation in the Mekong. In this context, maintenance of the MGC's social and cultural importance is in itself a goal of conservation initiatives.

Factors affecting the population: Habitat and environmental change in the Mekong basin has been gradual and of moderate magnitude until the very recent past, and it is unlikely that this has been a significant factor in past population change. More dramatic changes may have occurred in the very recent past. Recent 'rapid blasting' and the commissioning of several dams in the upper river may have affected physical habitat structure, and increasingly affect flow patterns and water levels in the future. Fishing can be identified as the main driver of past changes in population abundance and structure. The exceptionally intensive Chiang Khong fishery in the 1980s and 90s in particular is likely to account for the dramatic population decline observed over this period. Interactions with other species, either native or non-native, are unlikely to have played a significant role in past population change, and there are no known issues in this regard for the future. Interactions with cultured fish are unlikely to have played a significant role in past population change, but may become a major issue in the future due to both intentional and accidental releases. At present the cultured population is likely to exceed the wild population in abundance.

137 **Conservation strategy:** Fishing. Fishing mortality on the recruited population should be
138 maintained at very low levels. For the next two decades, catches should not exceed 10 mature fish
139 per year in order to allow some population recovery. The legal mechanisms for harvest regulation
140 are in place in Cambodia and Thailand, but need to be strengthened in the Lao PDR. Habitat
141 conservation. Maintaining the overall Mekong ecosystem (flows, physical habitats and connectivity)
142 clearly is important to ensuring the long-term survival of the species in the wild. Given that habitat
143 use and migration patterns of the species are largely unknown, no essential habitat can be
144 identified except for the spawning area. The spawning area is very likely to be located within some
145 50 miles north of Chiang Khong, and it can be clearly identified as essential habitat. An immediate
146 priority should be to protect this habitat. There have been some suggestions that a second
147 spawning area may be located near the Cambodian town of Stung Treng, but this has not been
148 confirmed by direct observations. Captive breeding. The captive population of MGC maintained by
149 the Thai Department of Fisheries provides a vital 'insurance', safeguarding the survival of the
150 species should it become extinct in the wild. The captive population should be managed carefully
151 so as to conserve its genetic diversity, should re-introduction become necessary. For the time
152 being, captive-bred fish should not (or only in very low numbers) be released into the Mekong or its
153 tributaries because the wild population is likely to recover naturally. Releases would have no net
154 benefit but could compromise this process through ecological and genetic interactions with captive-
155 bred fish. Aquaculture. Escapes of MGC grown in commercial aquaculture could pose a significant
156 threat to the wild population. Measures should be taken to minimize the risk of such escapes
157 occurring. It should be noted that, because the wild population carrying capacity appears to be
158 quite low, releases of even low numbers of captive-bred fish can have significant impacts on the
159 wild population.

160
161 **Monitoring, research and adaptive management:** Monitoring should encompass factors
162 affecting the wild population, the status of the wild population, and the status of the captive
163 population. Monitoring of factors affecting the population is particularly important because it will
164 allow identifying and alleviating risks well before population impacts would become measurable.
165 Monitoring of the population itself is possible only on the basis of fisheries data from traditional
166 targeted and incidental fisheries (principally in Chiang Khong and the Tonle Sap River,
167 respectively). There is thus a tradeoff between minimising harvest and maximising monitoring
168 information, but maintenance of a low level of traditional harvesting is deemed not to pose a great
169 risk to the population. Monitoring of the captive population should cover its demography and
170 breeding practice in relation to the genetic management plan. Further molecular genetic analysis
171 will be required approximately every 5 years in order to extend the breeding plan to newly maturing
172 fish. Further research is required on habitat use and movement of wild and released captive-bred
173 fish with a view to identifying key habitats and supporting a re-introduction programme should this
174 become necessary. Adaptive management entails responding to new monitoring information in a
175 way that promotes long-term persistence of the wild population.

176
177 **Implementation:** The strategy will be implemented by multiple institutions. The MRC Technical
178 Advisory Board for Fisheries (MRC-TAB) will assume a coordinating function and conduct annual
179 reviews and assessments of monitoring information. The Royal Cambodian Fisheries
180 Administration will continue to restrict harvesting of the giant catfish and minimise its incidental
181 capture. The Lao Department of Livestock and Fisheries, and LARReC will strive to increase legal
182 protection of the species from unsustainable harvesting. The Royal Thai Department of Fisheries
183 will maintain its captive population of giant catfish and apply improved breeding protocols based on
184 molecular genetic analysis. It will also continue to regulate the harvest of giant catfish with a view
185 to conserving the wild population while also providing population monitoring data and maintaining
186 the indicator value of the species.

187
188
189
190
191
192

193	Contents	
194		
195	Executive summary	3
196	Contents	5
197	1 Introduction	6
198	1.1 Importance of the Mekong giant catfish.....	6
199	1.2 Conservation vision	7
200	1.3 Legal provisions	7
201	1.3.1 National Level policies and legal instruments	7
202	1.3.2 Regional and international level agreements and legislative instruments.....	8
203	1.3.3. Regional level agreements that may affect the giant catfish population	9
204	2 Population status	10
205	2.1 Life cycle and biology	10
206	2.2 Population and threat history.....	11
207	2.3 Population status.....	14
208	2.3.1 Wild population abundance and trend	14
209	2.3.2 Wild population genetic diversity.....	15
210	2.3.3 Captive population status	15
211	2.3.4 Red list status	16
212	3 Factors affecting the Mekong giant catfish population	17
213	3.1 Fishing.....	17
214	3.2 Habitat.....	18
215	3.3 Captive/supportive breeding.....	19
216	3.4 Interactions with other species	19
217	3.5 Interactions with cultured fish	19
218	4 Specific conservation goals	19
219	5 Conservation strategy	20
220	5.1 Limiting fishing.....	20
221	5.2 Protecting critical habitat	20
222	5.3 Captive/supportive breeding.....	21
223	5.4 Minimizing interactions with escapees from aquaculture.....	22
224	5.5 Institutional issues	22
225	5.5.1 National legislation.....	22
226	5.5.2 Community and co-management.....	22
227	6 Monitoring, research and adaptive management.....	23
228	6.1 Monitoring	23
229	6.1.1 Monitoring threats.....	23
230	6.1.2 Monitoring wild population status.....	23
231	6.1.3 Monitoring the captive population	24
232	6.2 Research.....	24
233	6.3 Adaptive management	25
234	7 Implementation	25
235	7.1 Strategy coordination and review	25
236	7.2 Specific tasks	25
237	References	25
238		

239 **1 Introduction**

240
241 The Mekong giant catfish (MGC), *Pangasianodon gigas*, is one of the largest freshwater fishes in
242 the world, measuring up to three meters in length and weighing in excess of 300 kilograms. It is a
243 Mekong endemic (i.e. it occurs naturally only in the Mekong River Basin). A charismatic animal
244 revered throughout the lower Mekong region, the species is of great cultural importance. It is also
245 widely recognized as an indicator of ecological integrity of the Mekong ecosystem, due to its long-
246 distance migrations, size and longevity.

247
248 The giant catfish is mentioned in the World Conservation Union (IUCN) Red List of Endangered
249 Species, the Convention on the Conservation of Migratory Species (CMS), the Convention on
250 Biological Diversity (CBD), the Convention on International Trade in Endangered Species (CITES)
251 and the Food and Agricultural Organization's Code of Conduct for Responsible Fishing.

252
253 The status of Mekong giant catfish is believed to be precarious, owing to historical overfishing and
254 the impacts of recent and likely future habitat alterations. The species is listed as critically
255 endangered in the 2003 IUCN Red List. A range of conservation measures are being implemented,
256 including harvest restrictions, captive breeding, and conservation of habitats.

257
258 The purpose of this conservation strategy is to assess current population status and the nature of
259 threats, and to identify effective conservation actions. The strategy has been developed by the
260 Mekong Giant Catfish Working Group, a working party of representatives from the Fisheries
261 Departments of the lower Mekong countries (Cambodia, Lao PDR, Thailand and Vietnam),
262 regional organisations, and the conservation NGOs (see Appendix 1 for a list of members).

263
264
265 **1.1 Importance of the Mekong giant catfish**

266
267 The Mekong giant catfish is important primarily for its existence, cultural and indicator/information
268 value. Its importance as a fisheries resource is low, and the species is unlikely to play an important
269 role in the functioning of the Mekong river ecosystem.

270
271 A charismatic animal revered throughout the lower Mekong region, the species is of **great cultural**
272 **importance**. There is a long tradition of fishing for the species, possibly going back over 3000
273 years as indicated by depiction of the species on cave paintings near Ubon Ratchathani.
274 Traditional fishing targets the spawning migration of the giant catfish, it is highly seasonal and
275 preceded by an elaborate ceremony. Traditional fishing is now largely restricted to the town of
276 Chiang Khong, the last place in Thailand where the Mekong giant catfish was caught in any
277 appreciable numbers until very recently. Presently only a very limited level of 'demonstration
278 fishing' is carried out at Chiang Khong. The town attracts several hundred visitors every year
279 during the catfish ceremony, in which the whole town participates.

280
281 The giant catfish is widely recognized as an **indicator of ecological integrity of the Mekong**
282 **ecosystem**, due to its long-distance migrations, size and longevity. Hence many organisations
283 have adopted the giant catfish as a flagship species to promote conservation of the wider Mekong
284 ecosystem.

285
286 Owing to its rarity, the species does not contribute significantly to the overall Mekong **fisheries**
287 **catch in biomass or value**. Basin-wide catches are likely to have remained below 150/year
288 throughout documented history, and currently do not exceed 20/year. Hence even though the
289 individual fish can be worth up to US\$ 3000.-, the market value of the overall catch is small
290 compared to the basin total. There are no people whose livelihoods depend strongly on exploiting
291 the species.

292
293 The species is herbivorous and, despite its large size, is unlikely to exert an important influence on
294 the structure or functioning of the Mekong ecosystem.

295
296
297
298
299
300
301
302
303
304
305
306
307
308
309
310
311
312
313
314
315
316
317
318
319
320
321
322
323
324
325
326
327
328
329
330
331
332
333
334
335
336
337
338
339
340
341
342
343
344
345
346
347
348
349
350
351

1.2 Conservation vision

The core conservation vision of the Mekong Giant Catfish Conservation Group, which underpins the conservation strategy, is the maintenance of a viable wild population of Mekong giant catfish. Maintenance of critical habitats and ecosystem processes in the Mekong basin is clearly important if a wild population is to be maintained. The presumed transboundary migrations and reliance on a variety of habitats of the MGC make it an ideal flagship species for ecosystem conservation in the Mekong. In this context, maintenance of the MGC's social and cultural importance is in itself a goal of conservation initiatives.

1.3 Legal provisions

There are a number of legal provisions for, or affecting the conservation of the giant catfish. The species is protected by national law in Cambodia (where it must be released if caught in fisheries) and in Thailand (where fishing for the giant catfish is prohibited, but special permission can be granted by the Department of Fisheries). No specific legal protection exists in the Lao PDR. The species is further protected, implicitly or explicitly, by regional and international agreements.

1.3.1 National Level policies and legal instruments

Cambodia

Under the Fisheries Law, the MGC is recognized as an Endangered Species. Although under Article 23, transporting, processing, buying, selling, and stocking endangered fishery resources is possible with permission, no such permission has been granted for giant catfish. Specific regulations are in place to facilitate the implementation of the Fisheries Law. These regulations include the need to release specified endangered fish species including the giant catfish if they are captured.

Lao PDR

Due to the non-existence of specific legislation related to fisheries, the Forestry Law (1996) is the most relevant piece of legislation. There is no specific mention of giant catfish within the Forestry Law but relevant 'Articles' make reference to wildlife and fish. E.g. Article 39 indicates that the sate is responsible for categorising the protection status of species; whilst Article 40 mentions that some endangered species are subject protection. The MGC is not afforded any protection status in Lao PDR under any specific legislation.

Thailand

In Thailand, fishing for Mekong giant catfish is illegal. Thai fisheries law, under Article 32 (5), (6), and (7) prohibits the capture of giant catfish in the Mekong River, except with the written permission of the Director of the Department of Fisheries. The law absolutely prohibits anybody to conduct giant catfish fisheries in the Mekong river - in the area of Nongkai, Loei, Mukdaharn, Nakornpanom, Ubonratchathani, and Chaingrai provinces - except with a written permission from Fisheries Department. Where permits are issues these must specify the types, size, number, and time that the fisheries will be permitted. Up to 2005, the Thai Department of Fisheries issued special permits for the giant catfish fishing in Chiang Khong in order to allow establishment of a genetically viable captive population. No such permit has been issued in 2006, when a voluntary agreement was signed by the fishers for cessation of catfish fishing in Chiang Khong.

The Mekong giant catfish may also be protected by the Wildlife Protection and Conservation Act (February 25, 1992).

352 Vietnam

353

354 In Vietnam, the species is listed in the Red Book and thus afforded special legal protection.
355 Vietnam is at the edge of the species' range, and no recent captures or sightings have been
356 reported. It is thus unlikely that further, specific protection is required in Vietnam.

357

358

359 **1.3.2 Regional and international level agreements and legislative instruments**

360

361 The Mekong Agreement and related provisions

362

363 The Mekong Agreement of 1995 is the foundation for the Mekong River Commission (MRC) and is
364 therefore of paramount importance to the four member countries. In Article 3, parties agree "To
365 protect the environment, natural resources, aquatic life and conditions, and ecological balance of
366 the Mekong River Basin from pollution and other harmful effects". The two upstream countries,
367 China and Myanmar, are not signatories and thus threats originating upstream or stocks with
368 distribution ranges beyond the jurisdiction of the four member countries are not fully considered by
369 this legal instrument.

370

371 An agreement on the procedures concerning the maintenance of flows on the Mekong mainstream
372 has been signed on 22 June 2006. The agreement requires the member states to co-operate in the
373 maintenance of acceptable minimum monthly flows in the dry season; acceptable natural reverse
374 flow of the Tonle Sap during the wet season; and prevention of peak flows greater than those
375 which occur naturally. The procedures clarify the related provisions of the Mekong Agreement
376 through further defining the objectives, principles and scope of their application, as well as the
377 roles and responsibilities required of the various parties for their implementation, including the
378 MRC Council, the MRC Joint Committee, the National Mekong Committees and the MRC
379 Secretariat.

380

381 Convention on Biological Diversity (CBD)

382

383 One of the most important international legal frameworks of relevance for the management of
384 migratory, transboundary species is the Convention on Biological Diversity (CBD). All Mekong
385 riparian countries have signed and ratified the Convention. The CBD commits the states to the
386 objective of "...the conservation of biodiversity, the sustainable use of its components and the fair
387 and equitable sharing of the benefits arising out of the utilisation of genetic resources...". It further
388 makes special reference to the need for states to manage transboundary stocks (e.g. Article 3:
389 "...contracting parties shall ensure that activities within their jurisdiction or control do not cause
390 damage to the environment of other states or of areas beyond the limits of national jurisdiction").
391 The Convention specifically refers to the cooperation, among contracting parties, in research,
392 management and monitoring of biodiversity, including migratory, transboundary elements of
393 biodiversity. The CBD is a very comprehensive, legally binding international instrument and,
394 importantly, also includes the establishment of a financial mechanism for the provision of financial
395 resources to developing country parties (Article 21 of the CBD).

396

397 Convention on International Trade in Endangered Species (CITES)

398

399 CITES (the Convention on International Trade in Endangered Species of Wild Fauna and Flora) is
400 an international agreement between governments. Its aim is to ensure that international trade in
401 specimens of wild animals and plants does not threaten their survival. CITES accords varying
402 degrees of protection to more than 30,000 species of animals and plants.

403

404 CITES works by subjecting international trade in specimens of selected species to certain controls.
405 All import, export, re-export and introduction from the sea of species covered by the Convention
406 has to be authorized through a licensing system. The species covered by CITES are listed in three
407 Appendices, according to the degree of protection they need. The Mekong giant catfish is listed in

408 CITES Appendixes I, which includes species threatened with extinction. Trade in specimens of
409 these species is permitted only in exceptional circumstances.

410
411 A specimen of a CITES-listed species may be imported into or exported (or re-exported) from a
412 State party to the Convention only if the appropriate document has been obtained and presented
413 for clearance at the port of entry or exit. For Appendix-I specimens, an export permit may be
414 issued only if the specimen was legally obtained and the trade will not be detrimental to the
415 survival of the species.

416
417 Convention on Migratory Species (CMS)

418
419 Another relevant international legal instrument of relevance is the Convention on the Conservation
420 of Migratory Species of Wild Animals (CMS). The CMS is a framework Convention under which
421 contracting parties (nations) can develop specific measures for individual species or species
422 groups within their range. The CMS is, by nature, based on a species approach to conservation,
423 but it also recognises the importance of preserving habitats and ecosystems as a means to
424 conserve migratory animal species. The Convention lists endangered migratory species (i.e.
425 species of high priority for the Convention) in its Appendix I and species with “unfavourable
426 conservation status” in its Appendix II. The Mekong Giant Catfish is one of the four fish species
427 world-wide listed on Appendix I. However, none of the six riparian nations have signed the
428 Convention although efforts are underway to increase its profile in the region.

429
430 The Ramsar Convention on Wetlands

431
432 All Mekong riparian States (apart from Lao PDR) are signatories to the Ramsar Convention on
433 wetlands. Signatories are obliged to make wise use of their wetlands and aquatic ecosystems
434 within their territories and trans-boundary systems. Specific criteria are provided for the nomination
435 of wetlands or aquatic ecosystems based on threatened fish species (of which the MGC qualifies)
436 or if wetlands are important for particular life cycles of fish. In addition, at the most recent
437 Conference of Parties (COP 9 in Kampala, Uganda, 2005), a resolution was passed on the
438 conservation, production and sustainable use of fisheries resources. Ramsar sites at which the
439 giant catfish occurs include those along mainstream Mekong in Cambodia, and in the Tonle Sap
440 lake.

441
442 The Code of Conduct for Responsible Fisheries

443
444 The Code of Conduct for Responsible fisheries (adopted on 31 October 1995 by the FAO
445 Conference), sets out principles and international standards of behaviour for responsible practices
446 with a view to ensuring the effective conservation, management and development of living aquatic
447 resources, with due respect for the ecosystem and biodiversity. The Code recognises the
448 nutritional, economic, social, environmental and cultural importance of fisheries, and the interests
449 of all those concerned with the fishery sector. The Code takes into account the biological
450 characteristics of the resources and their environment and the interests of consumers and other
451 users. States and all those involved in fisheries are ‘encouraged to apply’ the Code and give effect
452 to it.

453
454

455 **1.3.3. Regional level agreements that may affect the giant catfish population**

456
457 Upper Mekong Navigation Improvement Agreement

458
459 The agreement between the four Upper Mekong countries, China, Lao PDR, Myanmar and
460 Thailand was signed on 20 April 2000 with a view towards developing international passenger and
461 cargo transportation on the Lancang-Mekong to promote and facilitate trade and tourism and to
462 strengthen cooperation in commercial navigation. The Lancang-Mekong Navigation Channel
463 Improvement Project, funded by the Chinese government, is part of a grand scheme to allow large
464 ships to freely navigate from Simao, China to Luang Prabang in Lao PDR. This agreement and the

465 activities that are underway may have significant impacts on physical habitats that are believed to
466 be critical to the MGC population, such as spawning grounds.

467
468 A number of other infrastructure investment/ development programmes for the Mekong Region are
469 underway through ADB and World Bank. These include the Mekong water transfer and
470 hydropower projects that could potentially interfere with the flow regime and therefore the migration
471 cycle of the giant catfish. It is also likely that navigational improvements will increase the volume of
472 shipped of potentially dangerous cargo such as oil and chemicals that could be released e.g. due
473 to groundings of vessels.
474

475 **2 Population status**

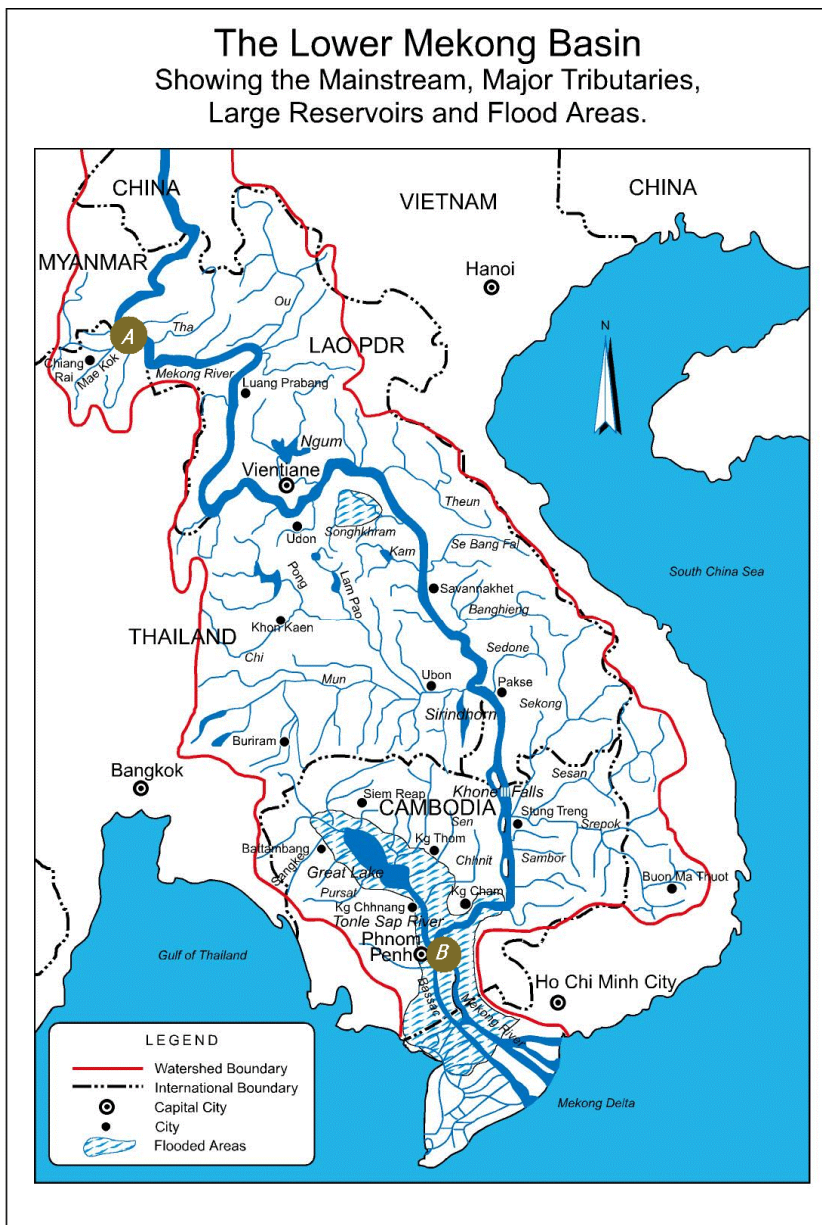
476 **2.1 Life cycle and biology**

477
478
479 The Mekong giant catfish is rare but widely distributed throughout the lower Mekong basin,
480 including the Tonle Sap in Cambodia. Adult fish appear to inhabit the main channels of the Mekong
481 River and its tributaries, while juveniles may also utilise other wetland areas in the basin. A
482 spawning area has been identified in Northern Thailand and Laos, and a further such area may
483 exist in the north of Cambodia but has not been confirmed.
484

485 Mature fish undergo long-distance migrations up-river during the dry season, and spawn at the
486 beginning of the wet season. Eggs and larvae are likely to be transported downstream where
487 juveniles may disperse into floodplain and other wetland areas. Small juveniles have only very
488 rarely been observed and not much is known about their ecology.
489

490 It appears likely that there is a single population of MGC in the Mekong, with spawning grounds
491 located north of Chiang Khong in northern Thailand. The possibility of two separate populations
492 above and below the Khone falls has been discussed, but genetic analyses so far do not provide
493 support for this idea. Unconfirmed reports of occasional catches of MGC at the Khone Falls
494 suggest (but do not prove) that fish from Cambodia may be able to negotiate the falls and migrate
495 to the Chiang Khong spawning area. It is also possible, however, that the lower basin acts as a
496 'sink' supplied with juveniles from the upper basin population, but with adults unable to return to
497 spawning grounds. There has also been some indication in local fisher's knowledge of a possible
498 spawning area located below the Khone Falls, near the Cambodian town of Stung Treng.
499 Quantitative information on population status and recovery used in this strategy document is based
500 on the assumption of a single population with a spawning area in Northern Thailand.
501

502 Giant catfish reach a maximum length of about 3 metres, and weight of over 300kg. Maturation
503 occurs at a length of about 2.2 m, most likely corresponding to an age of 16-20 years. Mature fish
504 suffer a natural mortality of about 10-15% per year, and it is likely that fish of 16-25 years of age
505 constitute the bulk of the spawning population.



506
507

508 **Figure 1.** Map of the lower Mekong basin. Green circles indicate the locations where Mekong giant catfish
509 have been regularly caught in fisheries in recent years: (A) Chiang Khong/Huay Xai in Northern Thailand and
510 Laos, and the Tonle Sap River in Cambodia. (Map courtesy of Mekong River Commission).
511

512

513

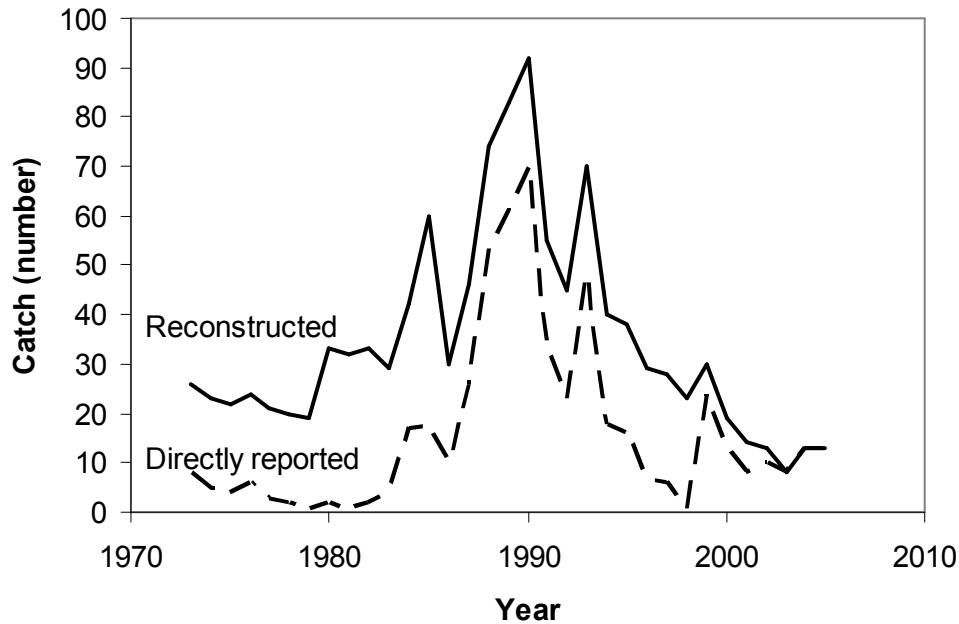
2.2 Population and threat history

514

515 Fisheries catches provide the only source of information for population assessment. Quantitative
516 information on catches is available intermittently for the past 100 years, with a fairly continuous
517 record for the Northern Thai/Lao fishery since 1970. The records suggest that catches over the
518 past 100 years have been low (below 40 per year) but fairly stable, i.e. there is no evidence of
519 continuous long-term decline in catches as has sometimes been suggested. In the 1970s, catches
520 appear to have been stable at an average of about 20-30 fish per year. Catches increased
521 substantially, up to a maximum of 90 per year in the late 1980s, driven mainly by the high profile
522 government-supported fishery in Chiang Khong (Northern Thailand). Catches declined again in the
523 1990s, dropping below 1970s 'pre-Chiang Khong fishery expansion' levels in 2000.
524

525 The current status of the MGC population has been assessed quantitatively by fitting a
526 mathematical population model to fisheries data. The model was then used to predict the likely
527 future population development for alternative conservation scenarios. Full details of the analysis
528 can be found in Lorenzen et al. (2006).

529
530
531



532
533
534
535
536

Figure 2. Directly reported catches and reconstructed catch history. The reconstructed history takes into account reported 'average' catches for locations and periods where no direct records exist.

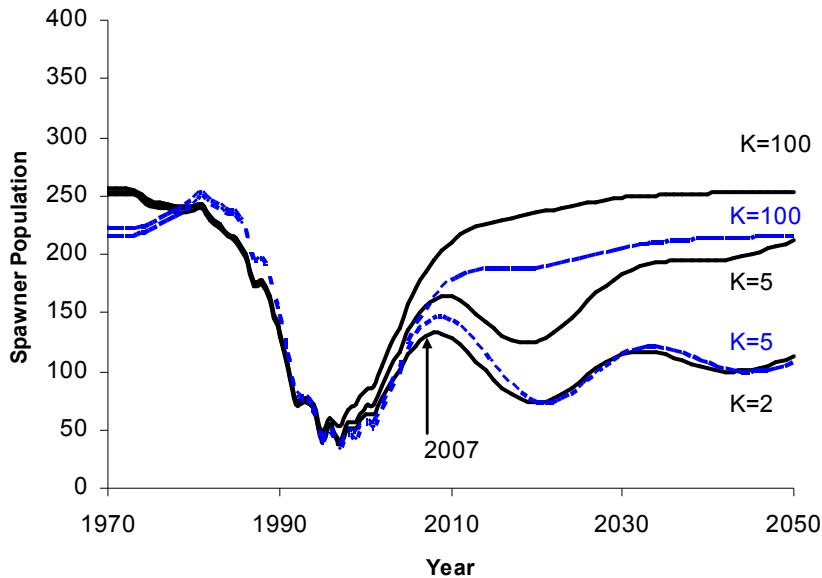
537
538
539
540
541
542
543

Historically, fishing has been the main threat to the MGC population. The intensification of fishing in Northern Thailand and Laos during the 1980s can clearly be identified as the main driver of population decline over this period. Aquatic habitats in the Mekong have remained largely intact until the very recent past, and even land use changes in the catchment have been moderate and gradual. Hence habitat modification is unlikely to have acted as an important driver of past population change.

544
545
546
547
548
549
550
551
552
553
554
555
556
557
558
559
560
561
562
563
564
565
566

There is only moderate uncertainty about the pattern of population abundance over the past 30 years because intensive fishing in Northern Thailand and Laos has led to a strong reduction in catch per unit of effort, an index of relative abundance. Because both, the catches and the impact of those catches on relative population abundance are well documented, it is possible to estimate absolute population abundance with a high degree of confidence. However, because population changes were driven mostly by fishing rather than biological processes such as recruitment, the data provide only limited information on the latter. Therefore, although we know the current population status quite well, there is uncertainty about long-term population trends, unexploited population abundance, and maximum sustainable catches. The key biological parameters that account for much of this uncertainty are the natural mortality rate of mature fish, and the level of recruitment compensation. Comparative information suggests that the natural mortality rate of mature MGC may be about 0.06 to 0.12 per year. Juvenile survival in fish populations is subject to compensatory density-dependence, i.e. the lower the number of eggs produced by the spawning stock, the higher their survival to recruitment will be. The increase in juvenile survival with decreasing egg production can be quantified by the compensation ratio K , the ratio of juvenile survival at very low spawner population size (and thus, egg production) to juvenile survival at unexploited spawner population size (carrying capacity). On average in fish populations, $K=5$, but values can range from very low compensation ($K=2$) to very high ($K=100$). The higher the recruitment compensation ratio, the less recruitment declines when spawner population abundance is reduced and the more resilient the population is to harvesting or disturbances. To account for uncertainties, population analyses were conducted for mortality rates of mature fish $M_r=0.06$ and 0.12 per year; and compensation ratios of $K=2$, 5 and 100 .

567 All analyses predicted a spawner abundance of about 250 fish at the start of the Chiang Khong
 568 fishing boom. Estimates of unexploited spawner abundance varied from 355 to 2200 fish,
 569 depending on the assumed natural mortality and recruitment compensation values. Hence the
 570 abundance at the start of the Chiang Khong fishing boom represents between 11% and 71% of the
 571 unexploited abundance. The population then declines dramatically to just 50 spawners in 1995 (2-
 572 14% of unexploited abundance). The Chiang Khong fishing 'boom' thus reduced spawner
 573 abundance by about 80% in just ten years. However, the model predicts that the population has
 574 since recovered significantly. The predicted current (2006) level of spawner abundance is
 575 estimated at 145 animals (7-40% of unexploited abundance).
 576
 577



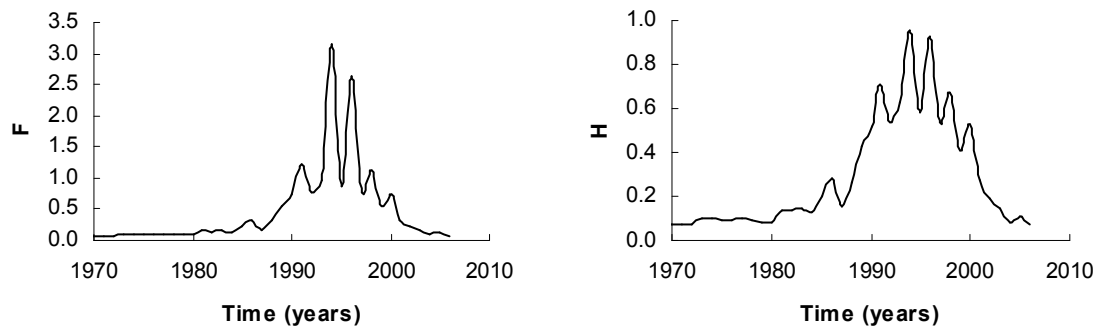
578
 579 **Figure 3.** Spawner population abundance reconstructed by the population model. The figure shows
 580 predicted recovery trajectories for different levels of compensatory density-dependence in recruitment.
 581 Predictions for natural mortality rates $M_r = 0.12 \text{ year}^{-1}$ (black solid lines) and $M_r = 0.12 \text{ year}^{-1}$ (blue dotted
 582 lines).
 583

584
 585 The predicted recovery of spawner numbers up to about 2010 is based largely on growth and
 586 maturation of fish spawned before the period of intensive fishing, and would occur even if there
 587 had been no successful reproduction since 1990. Subsequent population development depends on
 588 reproduction during and after the period of very low spawner abundance. Unless recruitment
 589 compensation is extremely high (K=100, Fig. 12), spawner abundance is predicted to decline again
 590 between 2010 and 2020 as a result of low spawner abundance and thus reproductive output during
 591 the 1990s. If reproduction had failed entirely from 1990 onwards (e.g. as a result of Allee effects, or
 592 due to environmental factors), this would become apparent only after 2010.
 593

594 The model-based population reconstruction also provides us with direct estimates of fishing
 595 mortality rates. The fishing mortality pattern (Fig. 4) clearly shows a dramatic increase in fishing
 596 pressure on the mature population between 1983 and the early 1990s. Fishing mortality rates then
 597 declined and returned to pre-1983 levels by 2004. Instantaneous fishing mortality rates F can be
 598 translated into proportional harvest rates H , i.e. the proportion of the available population harvested
 599 in the fishery. The fishery pre-1983 and post-2004 removed about 10% of the population per year.
 600 During 1990-2000, over 50% of the available population was harvested annually, with a maximum
 601 of 96% in 1995.
 602
 603
 604
 605
 606

607

608



609

610

611

612

613

614

615

Figure 4. Reconstructed fishing mortality F (left) and the corresponding proportion of the available population harvested H (right) for the period 1970 to 2006.

2.3 Population status

Population status and future development are assessed in terms of abundance predicted from a deterministic population model, and in terms of extinction risk and genetic diversity as assessed using a stochastic individual-based model.

618

619

620

Future population development will depend on factors such as:

621

622

623

624

625

626

627

- Availability of habitat
- Exploitation by fisheries
- Intentional or accidental release of captive-bred/cultured fish
- Occurrence of complete recruitment failure or other catastrophic events

Because the future change in these factors is uncertain, population development is predicted for different scenarios.

2.3.1 Wild population abundance and trend

629

630

631

632

633

634

635

636

637

638

As mentioned above, the current (2006) level of spawner abundance is estimated at about 145 animals, representing corresponding to (7-40%) of unexploited abundance. This represents a substantial increase from the very low spawner population abundance (50 animals) estimated for the 1990s. The predicted recovery to about 145 animals is based largely on growth and maturation of fish spawned before the period of intensive fishing, and would occur even if reproduction had failed for the past 20 years. The recovery to about 145 animals has been predicted by the population model and is consistent with the (limited) fishing catch and effort data available, but longer term monitoring is required to confirm that the population is indeed recovering as predicted.

Future development of the population will depend on the level of fishing and on continued, successful reproduction (which could be affected by loss of spawning or nursery habitat, or Allee effects related to the very low spawner abundance in the 1990s). Possible population trajectories are shown in Figure 5, for different scenarios and levels of recruitment compensation:

643

644

645

646

647

648

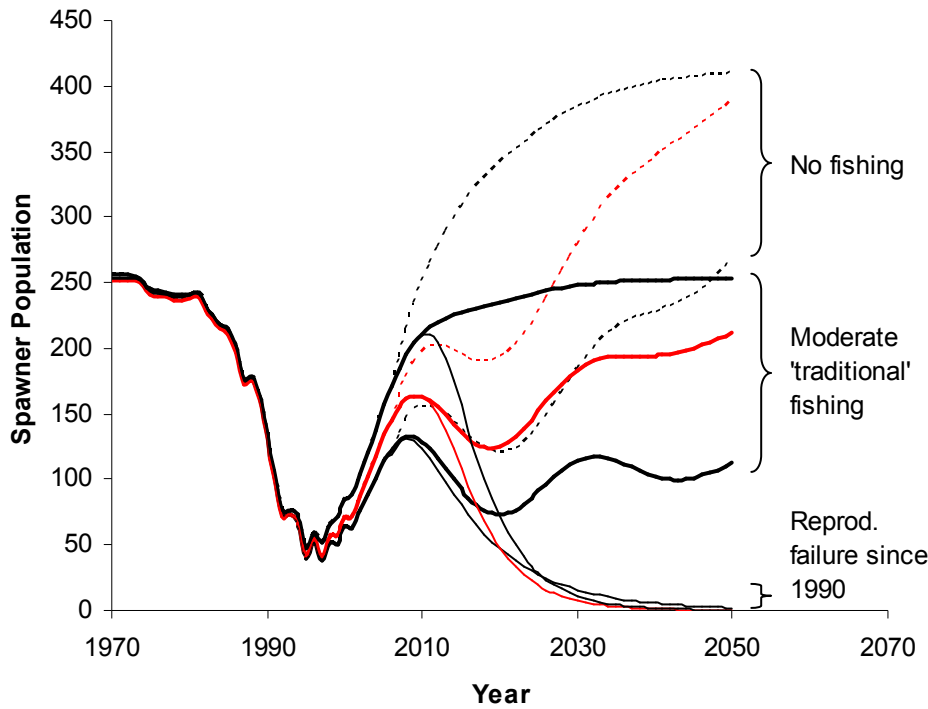
649

650

- If fishing continues at a moderate, 'traditional' level and reproduction is not compromised, the population is most likely to fluctuate around the current abundance for the next 20 years but increase slowly thereafter. If the degree of density-dependence in recruitment is very high, the population may recover to its historical abundance more quickly.
- If fishing ceases completely and reproduction is not compromised, then the population will recover more quickly and to a higher level of abundance, but a significant increase is unlikely to be noticeable before 2030.

651
652
653
654
655

- If reproduction had failed (e.g due to habitat degradation or Allee effects) since 1990, the population would decline below the level expected for moderate fishing without reproductive failure by about 2020.



656
657
658
659
660
661
662
663

Figure 5. Predicted spawner population abundance assuming normal recruitment with a 'traditional' (pre-1983) level of fishing or no fishing, or complete reproductive failure since 1990 with 'traditional' fishing. For all three scenarios, predictions are given for recruitment compensation values of $K=2, 5, \text{ and } 100$. Predictions are shown for a natural mortality rate of mature fish of 0.12 per year only.

664 **2.3.2 Wild population genetic diversity**

665
666 The genetic diversity of the giant catfish population is slightly lower than that of other large
667 Pangasiids in the Mekong and Chao Phraya basin. This suggests that the population has been
668 relatively small for a prolonged period, but there is no indication at the present time that population
669 viability and evolutionary potential have been significantly compromised. Molecular genetic studies
670 indicate that the effective population size of the wild population is between 55 and 137 animals.
671 This is about 10% of the census size estimated from the population assessment (defined as the
672 number of mature individuals recruiting to the population over one generation).
673

674 Intensive fishing between 1980 and 2000 (motivated partly by the establishment of the captive
675 broodstock) has removed over 900 wild fish maturing over this 20 year period (approximately one
676 generation). This is equivalent to about 50% of the census population. Hence the captive breeding
677 programme has sampled a large proportion of the wild population.
678
679

680 **2.3.3 Captive population status**

681
682 There is now a large captive population of MGC comprising some 20,000 individuals in 20 age
683 groups, most of these first generation offspring of wild parents. Although genetic management of
684 the captive population requires further attention, the current population is large, diverse and as yet

685 only moderately domesticated. Loss of genetic variation in the captive stocks is a common
686 phenomenon. The consequences include loss of rare alleles accompanying by the occasional
687 reduction of heterozygosity. However, a molecular genetic study has shown that levels of genetic
688 variation in the captive stock of MGC are commensurate with those of the wild stock based on the
689 same sets of microsatellite loci. This may be due to a large number of founders and a brief captive
690 history. Therefore the captive stock represents the genetic diversity in the wild stock of Mekong
691 giant catfish, and provides an effective means of conserving the species in captivity and for
692 possible re-introduction.
693

694 **2.3.4 Red list status**

695
696 The MGC is currently listed as critically endangered on the IUCN Red List. The quantitative
697 analysis suggests that this classification was fully warranted in the 1990s, based on criterion D
698 (population numbers fewer than 50 mature individuals) alone. The population is likely to have
699 recovered somewhat since, though conclusive empirical evidence of recovery can only be obtained
700 through monitoring over an extended period.
701

702 Given the information summarized above, the species has moved towards the 'borderline' between
703 the endangered (E) and critically endangered (CE) categories, but should still be considered
704 critically endangered. A brief outline assessment is given here against the red list criteria.
705

706 A. Reduction in population size

707
708 The population has declined by about 80% in three generations. The cause of decline
709 (unsustainable fishing) is understood and has largely ceased due to both reduced economic
710 incentive for fishing and conservation action. However, there is sustained and possibly, resurgent
711 fishing pressure on the MGC population. Hence the cause of decline has not fully been addressed.
712 There is also a substantial risk that the population will decline by 80% over the next three
713 generations due to current and projected decline in the quality of habitat (CE).
714

715 B. Geographic range

716
717 The species occurs over a geographical range > 100 km² and does not qualify for E or CE under
718 this criterion.
719

720 C. Small population size and decline

721
722 The population size currently numbers fewer than 250 mature individuals, a moderate decline over
723 the next generation is likely, and over 90% of mature individuals are likely to be in one sub-
724 population (CE).
725

726 D. Very small population size

727
728 The population is estimated to have numbered fewer than 50 mature individuals throughout much
729 of the 1990s. It is likely that the population has now recovered to about 145 mature individuals, but
730 conclusive empirical evidence of a recovery of this magnitude is not available. It is also likely that
731 the population will decline again temporarily as a result of low recruitment during the 1990s when
732 spawner population size was very low. (Has been CE, now likely E)
733

734 E. Quantitative analysis

735
736 No quantitative assessment of extinction probability has been carried out.
737
738
739
740

741 3 Factors affecting the Mekong giant catfish population

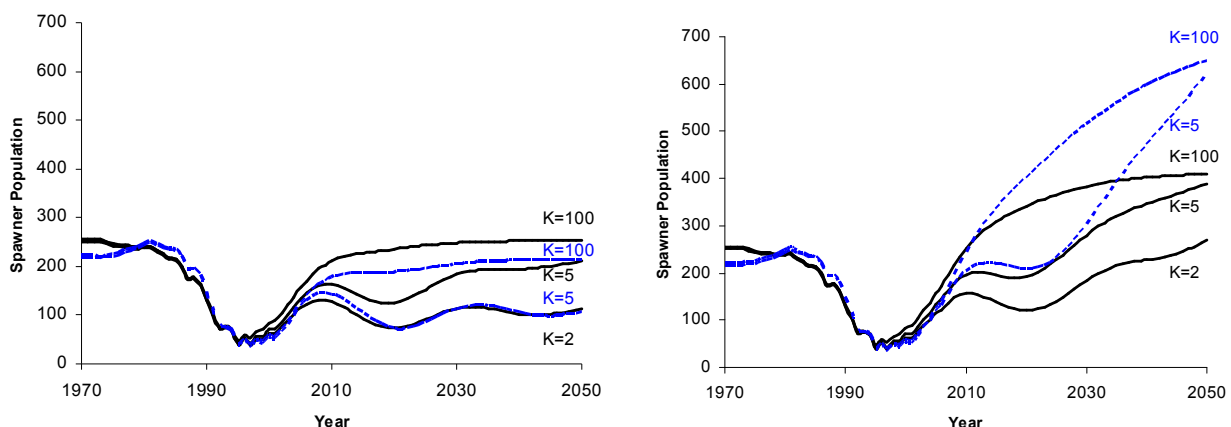
742 3.1 Fishing

743
744
745
746 Fishing was the main factor driving past population decline, and remains a potentially significant
747 threat. Incidental catches of giant catfish are rare, and targeted fishing is currently practised only at
748 very low intensity. However, targeted fishing has not ceased and could rebound once the
749 population has recovered to a level that makes fishing more profitable again, or if greater demand
750 for the species or the activity itself (e.g. through tourism) was created. It is thus important to set
751 quantitative biological limits to exploitation that should not be exceeded.

752
753 To assess the potential for sustainable exploitation of the giant catfish, the equilibrium
754 (=sustainable) catch and the corresponding spawner abundance have been calculated for
755 different levels of natural mortality and and recruitment compensation. The maximum sustainable
756 catch has been estimated at 20-40 fish per year, depending of the values of the uncertain
757 parameters. It is not possible, due to the uncertainties in biological parameters, to assess with
758 confidence whether or not the traditional level of fishing prior to the Chiang Khong 'boom'
759 overexploited the population. This may seem unfortunate, but it does not present a major problem
760 for management in the short-to-medium term because the population is currently depleted and will
761 not rebound to levels at which the maximum sustainable catch could be taken for at least 2-3
762 decades.

763
764 Predictions of fishing impacts on short-to-medium term population abundance are given for a
765 'traditional' level of fishing mortality, and for a scenario where all fishing for MGC is stopped from
766 2007. The 'traditional' fishing scenario is deemed most likely in the medium term, though closure of
767 the Chiang Khon/Huay Xay and decommissioning of the Dai net responsible for the bulk of MGC
768 catches in the Tonle Sap river would lead to the 'no fishing' scenario. The MGC population is
769 expected to recover under both scenarios (Fig. 6), but recovery would be faster and to a higher
770 level of abundance if fishing were discontinued. For recruitment compensation $K=5$, the population
771 would recover to pre-1983 abundance around 2025 in the absence of fishing, but would still be
772 below pre-1983 abundance in 2050 if fishing continued at the 'traditional' level.

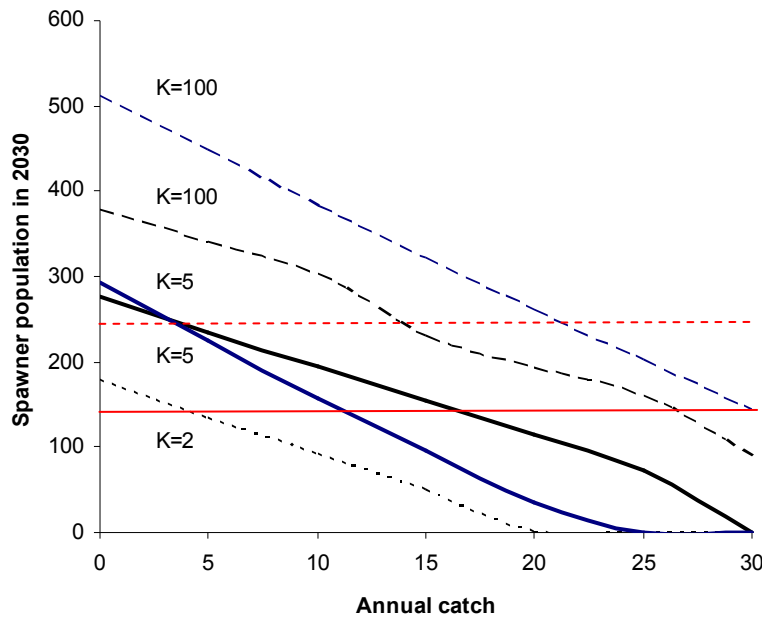
773
774
775
776



777
778
779 **Figure 6.** Predicted spawner population change given 'traditional' levels of fishing mortality (left) or no fishing
780 (right). Predictions for natural mortality rates of $M_r = 0.12 \text{ year}^{-1}$ (black solid lines) and $M_r = 0.12 \text{ year}^{-1}$ (blue
781 dotted lines).

782
783

784 Predictions of spawner population abundance in 2030 for different levels of annual catch (numbers
 785 of mature fish caught) between 2007 and 2030 are given in Fig. 7. Predictions for the most likely
 786 level of recruitment compensation ($K=5$) are similar for the two assumed levels of natural mortality.
 787 Only if harvesting is restricted to less than five mature fish per year will the spawner population
 788 rebuild to 'pre-boom' level of abundance of 250 fish by 2030. Harvesting 10-15 fish per year would
 789 stabilize the population at the current, very low level of about 145 spawners. Harvesting more than
 790 15 fish would lead to further population decline. The analysis shows clearly that, if population
 791 rebuilding is to be achieved at all, harvests should be limited to a basinwide maximum of 10 mature
 792 fish per year. Lower harvest levels are desirable to achieve faster rebuilding.
 793



794 **Figure 7.** Predicted spawner population in 2030 for different levels of annual catch (number of mature fish
 795 caught) between 2007 to 2030. Red horizontal lines show the abundance in 2006 (solid line) and prior to the
 796 Chiang Khong fishing boom. Predictions for natural mortality rates of $M_r = 0.12 \text{ year}^{-1}$ (black solid lines) and
 797 $M_r = 0.12 \text{ year}^{-1}$ (blue dotted lines).
 798
 799

800
 801 **3.2 Habitat**

802
 803 Mekong aquatic habitats have remained largely intact until very recently, but are now being
 804 modified substantially and rapidly. Key changes include:
 805

- 806 • Catchment land use change, in particular in floodplain habitat that is likely to act as the
 807 main nursery habitat. For example, forest clearing around the Tonle Sap Lake and the
 808 Mekong delta.
- 809 • River corridor engineering including dam construction. Dams reduce sediment and nutrient
 810 load, alter river flow, modify water temperature, and block fish migration. Dams may impact
 811 the spawning migration of giant catfish in Thailand and Lao PDR, because spawning
 812 behavior may be triggered by water quality or flow/timing of seasonal flooding.
- 813 • Waterway modification - Removal of rapids, canalization of the river bank, and dredging
 814 alter river habitat and may negatively impact Mekong giant catfish. The stretch of river
 815 between Chiang Khong and Chiang Saen, Thailand is almost certainly the key spawning
 816 habitat for giant catfish, but a second spawning area may exist near Stung Treng in
 817 Cambodia. Potentially harmful river modifications in the area include port construction
 818 (Chiang Saen) and rapid blasting (as part of the Mekong Navigation Improvement Project).
 819 Increased boat traffic may in itself cause noise pollution and erosion/sedimentation issues.
- 820 • Bridge construction in sensitive habitats: a third Mekong bridge is planned for Chiang
 821 Khong/Huay Xai, near the likely spawning grounds of giant catfish.

822
823
824
825
826
827
828
829
830
831
832
833
834
835
836
837
838
839
840
841
842
843
844
845
846
847
848
849
850
851
852
853
854
855
856
857
858

859
860
861
862
863
864
865
866
867
868
869
870
871
872
873
874
875
876
877

It is not possible at present to gauge quantitatively the likely impact of such habitat changes on the giant catfish population. Changes in localized, critical habitats such as the spawning ground(s) are likely to be most detrimental and possibly, catastrophic. Changes in the availability of other habitats are likely to have a more moderate, proportional effect on population carrying capacity.

3.3 Captive/supportive breeding

A captive/supportive breeding programme has been operational for MGC since 1983. Broodstock capture for the programme was an important factor in the intensification of fishing at Chiang Khong and thus, the depletion of the wild population. There have been some releases, mostly of small captive-bred fish, into the Mekong but the fate of these animals is unknown. Only some of the animals were marked and it is possible that the current wild population includes some animals that were spawned in the hatchery from wild-caught parents. There is no indication however that captive releases have had any significant impact on population abundance or structure. The importance of the captive population lies in the fact that it provides a vital 'insurance' for species conservation and will allow supplementation or re-introduction of the wild population should the latter fail to recover naturally.

3.4 Interactions with other species

There is no indication that biological interactions with other species are major conservation concerns at present.

'Technical' interactions, such as the incidental harvesting of juvenile Mekong giant catfish in the river catfish (*P. hypophthalmus*) fishery, and failure to identify and report any giant catfish caught in this way may affect population status and also the estimate of 'unexploited' population size of the species. There is no indication, however, that such incidental catches are common.

3.5 Interactions with cultured fish

Increasingly, however, interactions between captive-bred or commercially cultured MGC and the wild population may become an important threat. Lack of genetic resource management, intentional hybridization between MGC and other pangasiid catfish, and possible transfer of diseases are key risks.

4 Specific conservation goals

Specific conservation goals have been formulated as follows:

- 1) Maintain a viable and resilient population in the wild
 - a) Prevent further population decline or extinction in the short-to-medium term
 - b) Rebuild population abundance at least to the pre-1980 level (about 250 spawners)
 - b) Maintain genetic diversity and evolutionary potential
- 2) Maintain habitats and processes critical to the achievement of (1)
 - a) Geomorphological habitat (e.g. rapids likely to serve as spawning grounds)
 - b) Hydrology
 - c) Water and environmental quality
- 3) Maintain a viable and genetically representative captive population for possible re-introduction into the wild if necessary.
- 4) Maintain the social, economic and cultural importance of the species and its role as an indicator and flagship species for conservation

878

879 **5 Conservation strategy**

880

881 Key conservation measures are identified in the areas of fishing regulations, habitat protection, and
 882 maintenance of a representative captive population for possible re-introduction. Such measures
 883 may be supported by awareness building, the development of a regional cooperation framework,
 884 and thorough and transparent environmental impact assessment of infrastructure projects.

885

886

887 **5.1 Limiting fishing**

888

889 Fishing has been, and potentially remains a significant threat to the population of Mekong giant
 890 catfish. At the same time, fishing captures are the only occasions where the animal is “seen” in the
 891 wild and targeted fisheries with ceremonial elements (such as the one at Chiang Khong in Northern
 892 Thailand) contribute to public awareness. It is unlikely, and perhaps undesirable for giant catfish
 893 fishing to cease entirely, but catches must be limited to very low numbers in order to prevent
 894 extinction of the species in the wild. Population analysis suggests that in order to allow population
 895 recovery, no more than 10 adult giant catfish (individuals that are mature or nearly mature) should
 896 be taken basin wide per year for the next ten to 20 years. To achieve this, (1) targeted harvesting
 897 should be strictly limited through legal or community-based measures and (2) continued efforts
 898 should be made to minimize incidental capture and mortality of giant catfish in the Cambodian Dai
 899 fishery.

900

901 At present, Cambodian law forbids harvest of Mekong giant catfish without exception, while Thai
 902 law allows the issuing of special permits. There is no legal protection of the species from
 903 harvesting in Laos. It is thus important for biological limits to be taken into account in the
 904 determination of permits in Thailand, and for legal or community-based measures to be developed
 905 that would allow the same limits to be set and enforced in Laos. It should be noted that in recent
 906 years, catches have remained within the limits suggested here.

907

908 All targeted and known incidental fishing for the species should be carefully monitored for both,
 909 research/population assessment and enforcement of regulations where these are in place.
 910 Fisheries monitoring should be coordinated at basin (or lower basin) level. Regional cooperation in
 911 reporting, information exchange, and the setting of biological limits to fishing should be maintained
 912 and strengthened.

913

914 High priority measures:

915

916

917

918

919

920

921

922

5.2 Protecting critical habitat

923 Habitat and ecosystem conservation are key to safeguarding the species’ long-term future in the
 924 wild. As a long-distance migrant, the species likely relies on the integrity of, and access to a variety
 925 of habitats throughout the lower Mekong basin. Adult fish appear to inhabit the main channels of
 926 the Mekong River and its tributaries, while juveniles are likely to utilise floodplain wetlands.
 927 However little is known about the species’ specific habitat use and migrations, and it is not possible
 928 to identify critical habitat other than the fairly well-defined spawning area in Northern Thailand and
 929 Laos. A further spawning area such may exist in the north of Cambodia but has not been
 930 confirmed.

931

932 The spawning area(s) should be protected from geomorphological alterations (e.g. rapid blasting)
 933 and hydrological change (preserving in particular water levels and flows during the spawning

934 season). It may also become increasingly necessary to protect the areas (at least temporarily) from
 935 other sources of environmental degradation, such as disturbance by boat traffic or oil or chemical
 936 spills.

937
 938 Conservation of the wider Mekong river-floodplain ecosystem from catchment land use change,
 939 river corridor engineering including dam construction, and pollution will be important to the
 940 maintenance of a wild giant catfish population. It is thus crucial for MGC conservation efforts link
 941 with and influence wider policy processes in Mekong environmental management and
 942 conservation. The MGC itself can serve as a flagship species for such conservation efforts.

943
 944 High priority:

- 945 • Conserve spawning area(s) from 'rapid blasting' and from changes in hydrology
- 946 • Consider possible impact on Mekong giant catfish and other long-distance migratory fish
- 947 species in impact assessments for infrastructure development

948 949 950 951 **5.3 Captive/supportive breeding**

952
 953
 954 The captive population is large, relatively diverse and as yet only moderately domesticated. It is
 955 thus a key resource for species conservation, ensuring species persistence and enabling
 956 supplementation or re-introduction of the wild population. The captive population should be
 957 maintained, and managed primarily as a conservation resource until the wild population has
 958 demonstrably recovered to substantially higher levels of abundance and is no longer deemed to be
 959 critically Endangered or Endangered according to IUCN Red List criteria. Given the predicted
 960 development of the MGC population (3.2), this is unlikely to be the case for at least 2-3 decades.

961
 962 In order to avoid risks associated with unexpected catastrophes that may lead to loss of MGC
 963 broodstock, the population should be maintained at more than one facility. The four Fisheries
 964 Stations/Hatcheries Ayudthaya, Phayao, Chiangmai and Pitsanulok maintain the greatest share of
 965 genetic diversity in the captive population (relatively higher numbers of mtDNA haplotypes
 966 compared to other facilities), hence these facilities should be considered to maintain the MGC
 967 captive gene pools. A specific mating plan has been designed based on molecular genetic analysis
 968 (Na-Nakorn et al. 2008). The plan provides a basis for broodstock management for about the next
 969 five years, and should be implemented in order to maintain the greatest possible genetic diversity
 970 in the next generation of captive bred MGC.

971
 972 It is important that maturation of male and female of each breeding pair according to mating plan
 973 need to be synchronized. Therefore, broodstock rearing conditions (e.g. feed, controlled
 974 environments) and enhancement of gamete development by chronic application of hormone (e.g.
 975 implantation of gonadotropin releasing hormone) should be investigated to ensure that males are
 976 ready when females could spawn. Also, cryopreservation techniques for male gametes of MGC
 977 should be refined and applied to all hatcheries. Male gametes should be cryopreserved, possibly at
 978 a central unit or share amongst hatcheries for all males in MP5. Once females are ready to spawn
 979 then cryopreserved milt of appropriate males could be used. This will reduce the risks and costs
 980 associated with transporting fish from long distance.

981
 982 No further capture of wild broodfish is recommended at present, given that the captive population
 983 is diverse and is being carefully managed to maintain this diversity, and that the wild population
 984 remains in a very depleted state.

985
 986 For the time being, captive-bred fish should not be released into the Mekong or its tributaries, for
 987 two reasons: (a) The wild population is likely to recover naturally, unless there have been recent
 988 and as yet unknown negative effects on recruitment. Releases would have only limited net benefit,
 989 but may partially replace wild fish through ecological interactions. (b) Despite of good hatchery
 990 management developmental and genetic responses to the culture environment are likely to result
 991 in the captive-bred fish being less fit than their wild counterparts, and reproductive interactions

992 between the wild and captive-bred population segments may reduce spawning success or the
993 survival of offspring. It should be noted that, because the wild population carrying capacity appears
994 to be quite low, releases of even low numbers of captive-bred fish can have significant impacts on
995 the wild population.

996
997 A programme of releases of captive-bred fish for re-introduction or supplementation should
998 commence if and only if the wild population fails to recover as predicted. This assessment can be
999 made, at the earliest, around 2025.

1000
1001 High priority:

- 1002 • Improve broodstock management by implementing the mating plan and associated
- 1003 measures.
- 1004 • Develop/improve cryopreservation procedures.
- 1005 • No captive fish releases should be carried out in the Mekong unless the wild population
- 1006 fails to recover naturally.

1007
1008
1009 **5.4 Minimizing interactions with escapees from aquaculture**

1010
1011 Aquaculture of MGC is currently carried out only on very limited scale and does not pose a threat
1012 to the wild population. However, escapes of farmed MGC could become an important threat should
1013 the industry expand substantially in the Mekong basin. The current analysis suggests that even
1014 moderate escapes of a few tens or hundreds of large/mature animals can lead to significant
1015 replacement of wild with captive/cultured types, provided that the latter survive well in the wild and
1016 are reproductively competent. Results of MGC stocking in reservoirs suggest that cultured fish can
1017 survive well in semi-natural environments.

1018
1019 High priority:

- 1020 • Monitor expansion of the MGC farming industry and develop measures to improve
- 1021 containment should substantial expansion take place in the Mekong basin.

1022
1023
1024 **5.5 Institutional issues**

1025
1026 **5.5.1 National legislation**

1027
1028 National legislation in Cambodia and Thailand provides frameworks for protection of MGC against
1029 unsustainable harvesting. Relevant legal instruments in the Lao PDR should be improved in order
1030 to allow greater control of harvesting of MGC and potentially, other large migratory species.

1031
1032 **5.5.2 Community and co-management**

1033
1034 Community and co-management arrangements could aid the management of the remaining,
1035 targeted fishery for giant catfish in Northern Thailand and Laos (Chiang Khong/Huay Xai). Legal
1036 support for such arrangements should be considered where appropriate. Current efforts directed at
1037 cooperation between Lao and Thai provincial governments are a positive step.

1038
1039
1040

1041

1042 **6 Monitoring, research and adaptive management**

1043

1044 **6.1 Monitoring**

1045

1046

1047

1048

1049

1050

1051

1052

1053

1054

1055

1056 **6.1.1 Monitoring threats**

1057

1058

1059

1060

1061

1062

1063

1064

Due to the difficulties of monitoring population status and the long delay between any problems affecting reproduction and their manifestation in fisheries data, monitoring of known or likely threats is an important precautionary measure.

Table 1 Indicators of changes in threats that should be monitored regularly

Threat category	Indicators
Habitat	<ul style="list-style-type: none"> • Changes affecting geomorphology of likely spawning and nursing habitat • Changes in hydrology of likely spawning and nursing habitat and migration channels • habitat
Exploitation	<ul style="list-style-type: none"> • Change in targeted fishing effort for giant catfish • Change in catch from targeted fishing • Change in level of incidental catch • Indicator based on incidental culture of MGC in fish ponds (indicator of reproduction in wild)
Aquaculture	<ul style="list-style-type: none"> • Expansion of commercial aquaculture of giant catfish • Escapes of giant catfish from ponds or reservoirs with the Mekong watershed • Increasing promotion of hybrid catfish • Genetic changes in aquaculture stocks

1065

1066

1067

1068 **6.1.2 Monitoring wild population status**

1069

1070

1071

1072

1073

1074

1075

1076

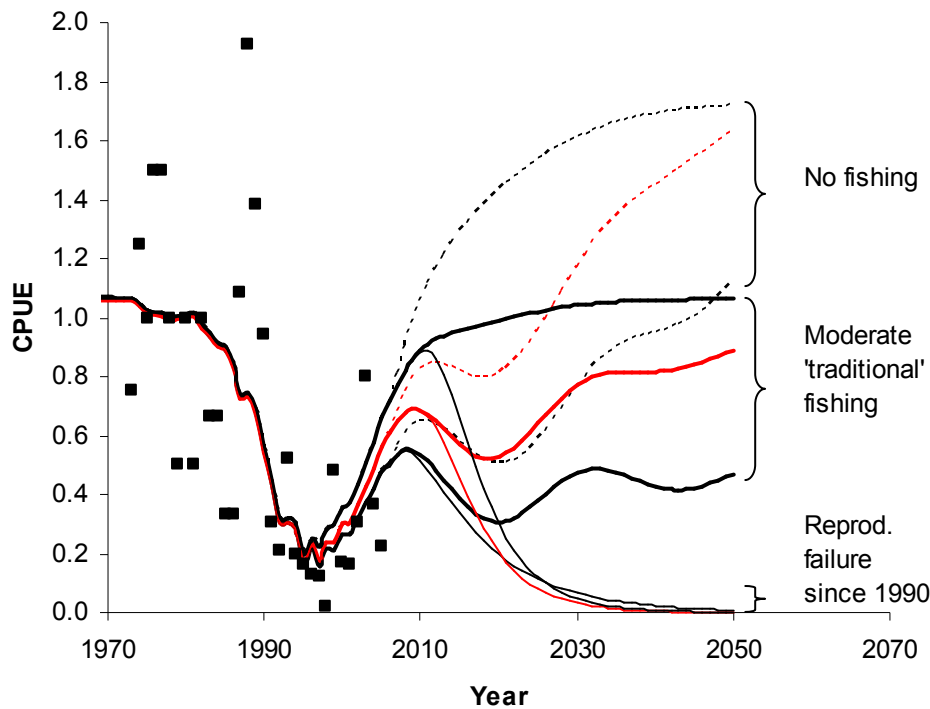
1077

1078

Monitoring of wild population status is currently possible only on the basis of fisheries catch and effort data. Such data are best interpreted using modelling tools such as the length-based stock reduction analysis employed in the status assessment.

The Chiang Khong fishery is a particularly valuable source of population monitoring data due to its long time series. A moderate level of traditional fishing in Chiang Khong may be allowed to continue in order to provide such information, but harvest must be strictly limited to sustainable levels. This must take into account incidental catches (mainly in Cambodia).

1079 CPUE monitoring data from Chiang Khong may be compared with predicted CPUE as shown in
 1080 Figure 9. It should be noted that, given overlap in predictions and variability in CPUE observations,
 1081 it is unlikely that even very different population trajectories can be distinguished before about 2025.
 1082
 1083



1084
 1085 **Figure 9** Historical and predicted future CPUE in the Chiang Khong fishery for alternative development
 1086 scenarios. Given overlap in predictions and variability in CPUE observations, it is unlikely that trajectories
 1087 can be distinguished before about 2025.
 1088
 1089
 1090

1091 **6.1.3 Monitoring the captive population**

1092 Monitoring of the captive population should cover its demography and breeding practice in relation
 1093 to the genetic management plan. Further molecular genetic analysis will be required approximately
 1094 every 5 years in order to extend the breeding plan to newly maturing fish. Monitoring procedures in
 1095 the captive breeding programme are considered adequate.
 1096
 1097

1098 **6.2 Research**

1099 Further research is indicated in a number of areas relevant to MGC conservation, including:
 1100
 1101

- 1102 • Continued development of wild population quantitative assessment in the light of new data
 1103 and methodological developments.
- 1104 • Assessment of habitat use and movement of wild or released captive-bred fish.
- 1105 • Identification of MGC larvae and sampling of larval stages for population assessment.

1106
 1107
 1108
 1109
 1110
 1111
 1112

1113 **6.3 Adaptive management**

1114

1115 Given the critical status of the wild population, there is little scope for active adaptive
1116 (experimental) management of the population. Adaptive management will thus be primarily
1117 passive, responding to new information as it arises from the threat and population monitoring
1118 programmes, e.g.:

1119

1120 • Adapting the regulation of fisheries if either the level of fishing or catches change in a way
1121 that suggest an increasing threat from harvesting

1122 • Undertaking habitat protection activities where new threats emerge

1123 • Initiating a supplementation or re-introduction stocking programme should the population
1124 decline to a very low level (based on population monitoring)

1125 • Developing management measures to reduce risk of escape from commercial giant catfish
1126 farms should the industry expand

1127

1128 **7 Implementation**

1129

1130 **7.1 Strategy coordination and review**

1131

1132 The strategy will be implemented by multiple institutions. The MRC Technical Advisory Body for
1133 Fisheries (MRC-TAB) will assume a coordinating function and conduct annual reviews and
1134 assessments of monitoring information.

1135

1136

1137 **7.2 Specific tasks**

1138

1139 The Fisheries Administration (Govt. of Cambodia) will continue to implement the fishery law and to
1140 minimise incidental capture of MGC.

1141

1142 The Lao Department of Livestock and Fisheries will strive to increase protection of the MGC and
1143 other large migratory fish species from unsustainable harvesting. This may involve legal and/or
1144 community-based measures.

1145

1146 The Royal Thai Department of Fisheries will maintain its captive population of giant catfish and
1147 apply improved breeding protocols based on molecular genetic analysis. It will also continue to
1148 regulate the harvest of giant catfish with a view to conserving the wild population while also
1149 providing population monitoring data and maintaining the indicator value of the species. Any
1150 requests for permits to harvest the protected species will be determined with due consideration of
1151 population status and quantitative biological limits to exploitation.

1152

1153 **References**

1154

1155 Lorenzen, K., Sukumasavin, N. & Hogan, Z. (2006) Development of a conservation strategy for the
1156 critically endangered Mekong giant catfish: Quantitative assessment report. Mekong Giant Catfish
1157 Working Group, NACA, Bangkok. 45 pp.

1158

1159 MGCWG (2005) Development of a conservation strategy for the critically endangered Mekong
1160 giant catfish: Inception workshop report. Mekong Giant Catfish Working Group, NACA, Bangkok.
1161 25 pp.

1162

1163 Na-Nakorn, U., Sukmanomon, S., Sriphairoj, K., Kamonrat, W., Sukumasavin, N. & Nguyen, T.T.T
1164 (2008) Development of a conservation strategy for the critically endangered Mekong giant catfish:
1165 Conservation of genetic resources of captive stock. Mekong Giant Catfish Working Group, NACA,
1166 Bangkok. 30 pp.